



**BENNER
PRODUCTS**

Manufactures
Representative



BENNER MINERAL FIBER CEILING

INDEX



**BENNER
PRODUCTS**

Manufactures
Representative

- 03 BENNERWINTER 5/8"**
- 04 BENNERWINTER 3/4"**
- 05 BENNERDU 5/8"**
- 06 BENNERDU 3/4"**
- 07 BENNERHEALTH 5/8"**
- 08 BENNERHEALTH 3/4"**
- 09 BENNERFINE 5/8"**
- 10 BENNERFINE 3/4"**
- 11 BENNERLAST 5/8"**
- 12 BENNERLAST 3/4"**
- 13 BENNERCHOOKIE 5/8"**
- 14 BENNERCHOOKIE 3/4"**
- 15 BENNERSOFT 5/8"**
- 16 BENNERSOFT 3/4"**
- 17 BENNERGLASS**
- 18 BENNER GLASS PRO**
- 19 BENNERPVC**
- 20 BENNER SUSPENSION**



BENNER MINERAL FIBER CEILING



Technical data for:	BennerWinter 5/8"
Raw material	Wet-formed mineral fiber
Surface Finish:	Factory-applied vinyl latex paint
Density:	260-300kg/m ³
Noise Reduction Coefficient (NRC):	≥0.55
Ceiling Attenuation Class (CAC):	≥35
Fire Resistance:	Class A in accordance with ASTM E 84
Humidity Resistance (RH):	70% to 95%
Microbial Resistance:	Highly resistant ASTM D6329
Light Reflectivity:	0.85
Environment:	Contains recycled material
*Meets highest air quality standards (ASTM D5116)	

BE THE CHANGE YOU WANT TO SEE IN THIS WORLD

AVAILABLE PANEL SIZES

2' x 2' x 3/4"

2' x 4' x 3/4"

2' x 2' x 5/8"

2' x 4' x 5/8"

SQUARE EDGE:



BEVELED
TEGULAR
EDGE:





Technical data for:	BennerWinter 3/4"
Raw material	Wet-formed mineral fiber
Surface Finish:	Factory-applied vinyl latex paint
Density:	260-300kg/m3
Noise Reduction Coefficient (NRC):	0.70
Ceiling Attenuation Class (CAC):	40
Fire Resistance:	Class A in accordance with ASTM E 84
Humidity Resistance (RH):	70% to 95%
Microbial Resistance:	Highly resistant ASTM D6329
Light Reflectivity:	0.85
Environment:	Contains recycled material
*Meets highest air quality standards (ASTM D5116)	

BE THE CHANGE YOU WANT TO SEE IN THIS WORLD

AVAILABLE PANEL SIZES

2' x 2' x 3/4" 2' x 4' x 3/4"

2' x 2' x 5/8" 2' x 4' x 5/8"

SQUARE EDGE:



BEVELED
TEGULAR
EDGE:





Technical data for:	BennerDu 5/8"
Raw material	Wet-formed mineral fiber
Surface Finish:	Factory-applied vinyl latex paint
Density:	260-300kg/m3
Noise Reduction Coefficient (NRC):	≥0.55
Ceiling Attenuation Class (CAC):	≥35
Fire Resistance:	Class A in accordance with ASTM E 84
Humidity Resistance (RH):	(RH): 80% to 99%
Microbial Resistance:	Highly resistant ASTM D6329
Light Reflectivity:	0.83
Environment:	Contains recycled material
*Meets highest air quality standards (ASTM D5116)	

BE THE CHANGE YOU WANT TO SEE IN THIS WORLD

AVAILABLE PANEL SIZES

2' x 2' x 3/4"

2' x 4' x 3/4"

2' x 2' x 5/8"

2' x 4' x 5/8"

SQUARE EDGE:



BEVELED
TEGULAR
EDGE:





Technical data for:	BennerDu 3/4"
Raw material	Wet-formed mineral fiber
Surface Finish:	Factory-applied vinyl latex paint
Density:	260-300kg/m3
Noise Reduction Coefficient (NRC):	0.70
Ceiling Attenuation Class (CAC):	40
Fire Resistance:	Class A in accordance with ASTM E 84
Humidity Resistance (RH):	(RH): 80% to 99%
Microbial Resistance:	Highly resistant ASTM D6329
Light Reflectivity:	0.83
Environment:	Contains recycled material
*Meets highest air quality standards (ASTM D5116)	

BE THE CHANGE YOU WANT TO SEE IN THIS WORLD

AVAILABLE PANEL SIZES

2' x 2' x 3/4"

2' x 4' x 3/4"

2' x 2' x 5/8"

2' x 4' x 5/8"

SQUARE EDGE:



BEVELED
TEGULAR
EDGE:





Technical data for:	BennerHealth 5/8"
Raw material	Wetformed minfiber PVC laminated film
Surface Finish:	PVC laminated film
Density:	260-300kg/m3
Noise Reduction Coefficient (NRC):	≥0.5
Ceiling Attenuation Class (CAC):	≥40
Fire Resistance:	Class A in accordance with ASTM
Humidity Resistance (RH):	95% to 99%
Microbial Resistance:	Highly resistant ASTM D6329
Light Reflectivity:	0.87
Environment:	Contains recycled material
*Meets highest air quality standards (ASTM D5116)	

BE THE CHANGE YOU WANT TO SEE IN THIS WORLD

AVAILABLE PANEL SIZES

2' x 2' x 3/4"

2' x 4' x 3/4"

2' x 2' x 5/8"

2' x 4' x 5/8"

SQUARE EDGE:



BEVELED
TEGULAR
EDGE:





Technical data for:	BennerHealth 3/4"
Raw material	Wetformed minfiber PVC laminatedfilm
Surface Finish:	PVC laminated film
Density:	260-300kg/m3
Noise Reduction Coefficient (NRC):	0.70
Ceiling Attenuation Class (CAC):	40
Fire Resistance:	Class A in accordance with ASTM
Humidity Resistance (RH):	95% to 99%
Microbial Resistance:	Highly resistant ASTM D6329
Light Reflectivity:	0.87
Environment:	Contains recycled material
*Meets highest air quality standards (ASTM D5116)	

BE THE CHANGE YOU WANT TO SEE IN THIS WORLD

AVAILABLE PANEL SIZES

2' x 2' x 3/4"

2' x 4' x 3/4"

2' x 2' x 5/8"

2' x 4' x 5/8"

SQUARE EDGE:



BEVELED
TEGULAR
EDGE:





Technical data for:	BennerFine 5/8"
Raw material	Wet-formed mineral fiber
Surface Finish:	Factory-applied vinyl latex paint
Density:	260-300kg/m3
Noise Reduction Coefficient (NRC):	≥0.55
Ceiling Attenuation Class (CAC):	≥35
Fire Resistance:	Class A in accordance with ASTM E 84
Humidity Resistance (RH):	70% to 95%
Microbial Resistance:	Highly resistant ASTM D6329
Light Reflectivity:	0.85
Environment:	Contains recycled material
*Meets highest air quality standards (ASTM D5116)	

BE THE CHANGE YOU WANT TO SEE IN THIS WORLD

AVAILABLE PANEL SIZES

2' x 2' x 3/4"

2' x 4' x 3/4"

2' x 2' x 5/8"

2' x 4' x 5/8"

SQUARE EDGE:



BEVELED
TEGULAR
EDGE:





Technical data for:	BennerFine 3/4"
Raw material	Wet-formed mineral fiber
Surface Finish:	Factory-applied vinyl latex paint
Density:	260-300kg/m3
Noise Reduction Coefficient (NRC):	0.70
Ceiling Attenuation Class (CAC):	40
Fire Resistance:	Class A in accordance with ASTM E 84
Humidity Resistance (RH):	70% to 95%
Microbial Resistance:	Highly resistant ASTM D6329
Light Reflectivity:	0.85
Environment:	Contains recycled material
*Meets highest air quality standards (ASTM D5116)	

BE THE CHANGE YOU WANT TO SEE IN THIS WORLD

AVAILABLE PANEL SIZES

2' x 2' x 3/4"

2' x 4' x 3/4"

2' x 2' x 5/8"

2' x 4' x 5/8"

SQUARE EDGE:



BEVELED
TEGULAR
EDGE:





Technical data for:	BennerLast 5/8"
Raw material	Wetformed min-fiber & fiberglass tissue
Surface Finish:	fiberglass tissue & latexpaint
Density:	260-300kg/m3
Noise Reduction Coefficient (NRC):	≥0.6
Ceiling Attenuation Class (CAC):	≥35
Fire Resistance:	Class A in accordance with ASTM E 84
Humidity Resistance (RH):	95% to 99%
Microbial Resistance:	Highly resistant ASTM D6329
Light Reflectivity:	0.85
Environment:	Contains recycled material
*Meets highest air quality standards (ASTM D5116)	

BE THE CHANGE YOU WANT TO SEE IN THIS WORLD

AVAILABLE PANEL SIZES

2' x 2' x 3/4"

2' x 4' x 3/4"

2' x 2' x 5/8"

2' x 4' x 5/8"

SQUARE EDGE:



BEVELED
TEGULAR
EDGE:





Technical data for:	BennerLast 3/4"
Raw material	Wetformed min-fiber & fiberglass tissue
Surface Finish:	fiberglass tissue & latexpaint
Density:	260-300kg/m3
Noise Reduction Coefficient (NRC):	0.70
Ceiling Attenuation Class (CAC):	40
Fire Resistance:	Class A in accordance with ASTM E 84
Humidity Resistance (RH):	95% to 99%
Microbial Resistance:	Highly resistant ASTM D6329
Light Reflectivity:	0.85
Environment:	Contains recycled material
*Meets highest air quality standards (ASTM D5116)	

BE THE CHANGE YOU WANT TO SEE IN THIS WORLD

AVAILABLE PANEL SIZES

2' x 2' x 3/4"

2' x 4' x 3/4"

2' x 2' x 5/8"

2' x 4' x 5/8"

SQUARE EDGE:



BEVELED
TEGULAR
EDGE:





Technical data for:	BennerChookie 5/8"
Raw material	Wetformed minfiber & fiberglasstissue
Surface Finish:	fiberglasstissue & factory latex paint
Density:	260-300kg/m3
Noise Reduction Coefficient (NRC):	≥0.55
Ceiling Attenuation Class (CAC):	≥35
Fire Resistance:	Class A in accordance with ASTM E 84
Humidity Resistance (RH):	95% to 99%
Microbial Resistance:	Highly resistant ASTM D6329
Light Reflectivity:	0.85
Environment:	Contains recycled material
*Meets highest air quality standards (ASTM D5116)	

BE THE CHANGE YOU WANT TO SEE IN THIS WORLD

AVAILABLE PANEL SIZES

2' x 2' x 3/4"

2' x 4' x 3/4"

2' x 2' x 5/8"

2' x 4' x 5/8"

SQUARE EDGE:



BEVELED
TEGULAR
EDGE:





Technical data for:	BennerChookie 3/4"
Raw material	Wetformed minfiber & fiberglasstissue
Surface Finish:	fiberglasstissue & factory latex paint
Density:	260-300kg/m3
Noise Reduction Coefficient (NRC):	0.70
Ceiling Attenuation Class (CAC):	40
Fire Resistance:	Class A in accordance with ASTM E 84
Humidity Resistance (RH):	95% to 99%
Microbial Resistance:	Highly resistant ASTM D6329
Light Reflectivity:	0.85
Environment:	Contains recycled material
*Meets highest air quality standards (ASTM D5116)	

BE THE CHANGE YOU WANT TO SEE IN THIS WORLD

AVAILABLE PANEL SIZES

2' x 2' x 3/4"

2' x 4' x 3/4"

2' x 2' x 5/8"

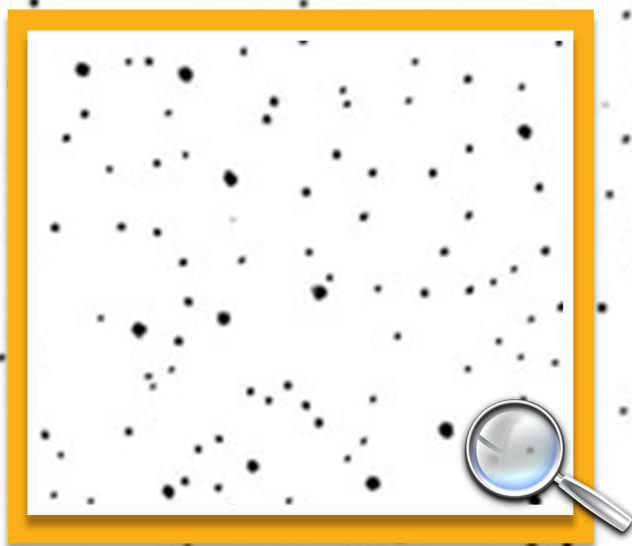
2' x 4' x 5/8"

SQUARE EDGE:



BEVELED
TEGULAR
EDGE:





Technical data for:	BennerSoft 5/8"
Raw material	Wetformed Mineral Fiber
Surface Finish:	Factory applied vinyl latex paint
Density:	280-320kg/m3
Noise Reduction Coefficient (NRC):	≥0.55
Ceiling Attenuation Class (CAC):	≥35
Fire Resistance:	Class A in accordance with ASTM E 84
Humidity Resistance (RH):	95% to 99%
Microbial Resistance:	Highly resistant ASTM D6329
Light Reflectivity:	0.85
Environment:	Contains recycled material
*Meets highest air quality standards (ASTM D5116)	

BE THE CHANGE YOU WANT TO SEE IN THIS WORLD

AVAILABLE PANEL SIZES

2' x 2' x 3/4" 2' x 4' x 3/4"

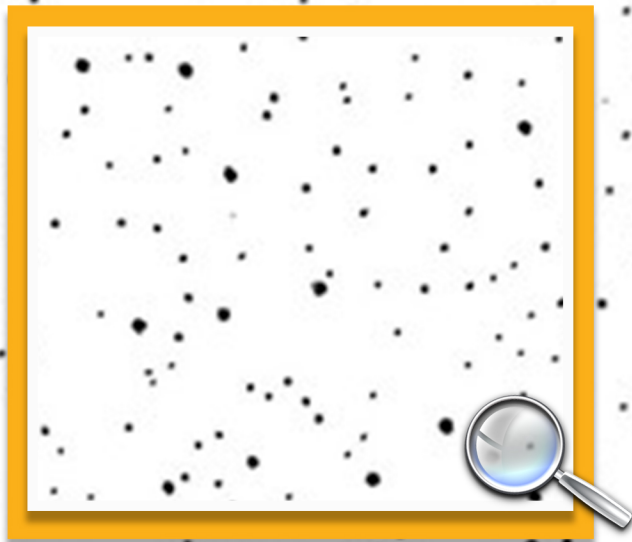
2' x 2' x 5/8" 2' x 4' x 5/8"

SQUARE EDGE:



BEVELED
TEGULAR
EDGE:





Technical data for:	Bennersoft 3/4"
Raw material	Wetformed Mineral Fiber
Surface Finish:	Factory applied vinyl latex paint
Density:	280-320kg/m3
Noise Reduction Coefficient (NRC):	0.70
Ceiling Attenuation Class (CAC):	40
Fire Resistance:	Class A in accordance with ASTM E 84
Humidity Resistance (RH):	95% to 99%
Microbial Resistance:	Highly resistant ASTM D6329
Light Reflectivity:	0.85
Environment:	Contains Recycled Material
*Meets highest air quality standards (ASTM D5116)	

BE THE CHANGE YOU WANT TO SEE IN THIS WORLD

AVAILABLE PANEL SIZES

2' x 2' x 3/4"

2' x 4' x 3/4"

2' x 2' x 5/8"

2' x 4' x 5/8"

SQUARE EDGE:



BEVELED
TEGULAR
EDGE:





Technical data for:	BennerGlass
Raw material	fiberglass wool with PVC laminated film
Surface Finish:	PVC laminated film
Density:	70kg/m ³
Noise Reduction Coefficient (NRC):	≥0.6
Ceiling Attenuation Class (CAC):	≥40
Fire Resistance:	Class A in accordance with ASTM E 84
Humidity Resistance (RH):	95% to 99%
Microbial Resistance:	Highly resistant ASTM D6329
Light Reflectivity:	0.85
Environment:	Contains recycled material
*Meets highest air quality standards (ASTM D5116)	

BE THE CHANGE YOU WANT TO SEE IN THIS WORLD

AVAILABLE PANEL SIZES

2' x 2' x 3/4"

2' x 4' x 3/4"

2' x 2' x 5/8"

2' x 4' x 5/8"

SQUARE EDGE:



BEVELED
TEGULAR
EDGE:





Technical data for:	BennerGlass Pro
Raw material	Fiberglass wool with transp- membrane
Surface Finish:	Factory applied vinyl latex paint
Density:	Varies per model
Noise Reduction Coefficient (NRC):	≤0.90
Ceiling Attenuation Class (CAC):	≥37
Fire Resistance:	Class A in accordance with ASTM E 84
Humidity Resistance (RH):	95% to 99%
Microbial Resistance:	Highly resistant ASTM D6329
Light Reflectivity:	0.88
Environment:	Contains recycled material
*Meets highest air quality standards (ASTM D5116)	

BE THE CHANGE YOU WANT TO SEE IN THIS WORLD

AVAILABLE PANEL SIZES

2' x 2' x 3/4"	2' x 4' x 3/4"
2' x 2' x 1"	2' x 4' x 1"
2' x 2' x 1-1/2"	2' x 4' x 1-1/2"

SQUARE EDGE:



BEVELED
TEGULAR
EDGE:





Technical data for:	BennerPVC-Kitchen
Raw material	Gypsum Board Substrate
Surface Finish:	PVC Vinyl Laminated / Foil Backing
Density:	3.2kg
Weight / Piece:	3.2kg for 2' x 2'
Ceiling Attenuation Class (CAC):	≥ 35
Fire Resistance:	Class A in accordance with ASTM E 84
Humidity Resistance (RH):	95% to 99%
Microbial Resistance:	High Resistant ASTM D6329
Light Reflectivity:	≥ 0.75
Environment:	Contains Recycled Material
*Meets highest air quality standards (ASTM D5116)	

BE THE CHANGE YOU WANT TO SEE IN THIS WORLD

AVAILABLE PANEL SIZES

2' X 2' X 3/8"

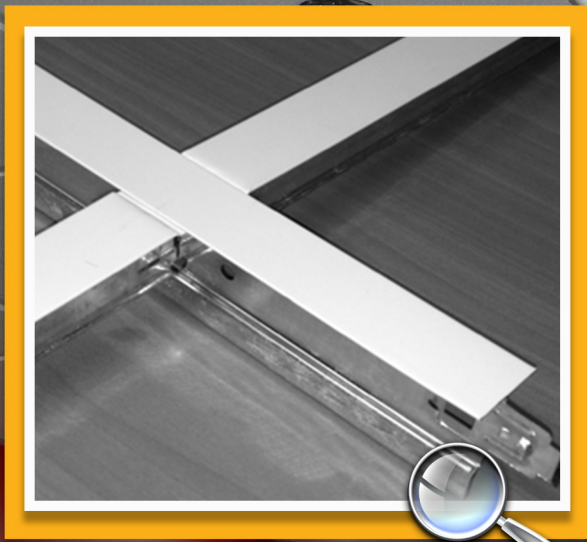
2' X 4' X 3/8"

SQUARE EDGE:



EDGE TAPED:





Features

Type:

➤ 38H and 32H

Materials:

➤ Components in general galvanized steel cap for use in general and fire rated commercial conditions.

➤ Hot-dipped galvanized steel body.

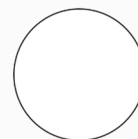
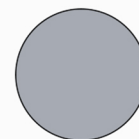
➤ Meets and exceeds all international code requirements including seismic.

➤ Applicable to various types of buildings.

Specification

Sectional View	T-grid type	Dimension
#116-32H T-grid		
	Main T	32mmx24mmx3660mm
	Cross T	25mmx24mmx1220mm
		25mmx24mmx610mm
#116-38 T-grid		
	Main T	38mmx24mmx3660mm
	Cross T	25mmx24mmx1220mm
		25mmx24mmx610mm
wall molding		
	L shape	22mmx22mmx3660mm
		22mmx19mmx3660mm
	w shape	19mmx19mmx19mmx19mm x3660mm

COLOR CHART



**BENNER
SUSPENSION SYSTEM**

